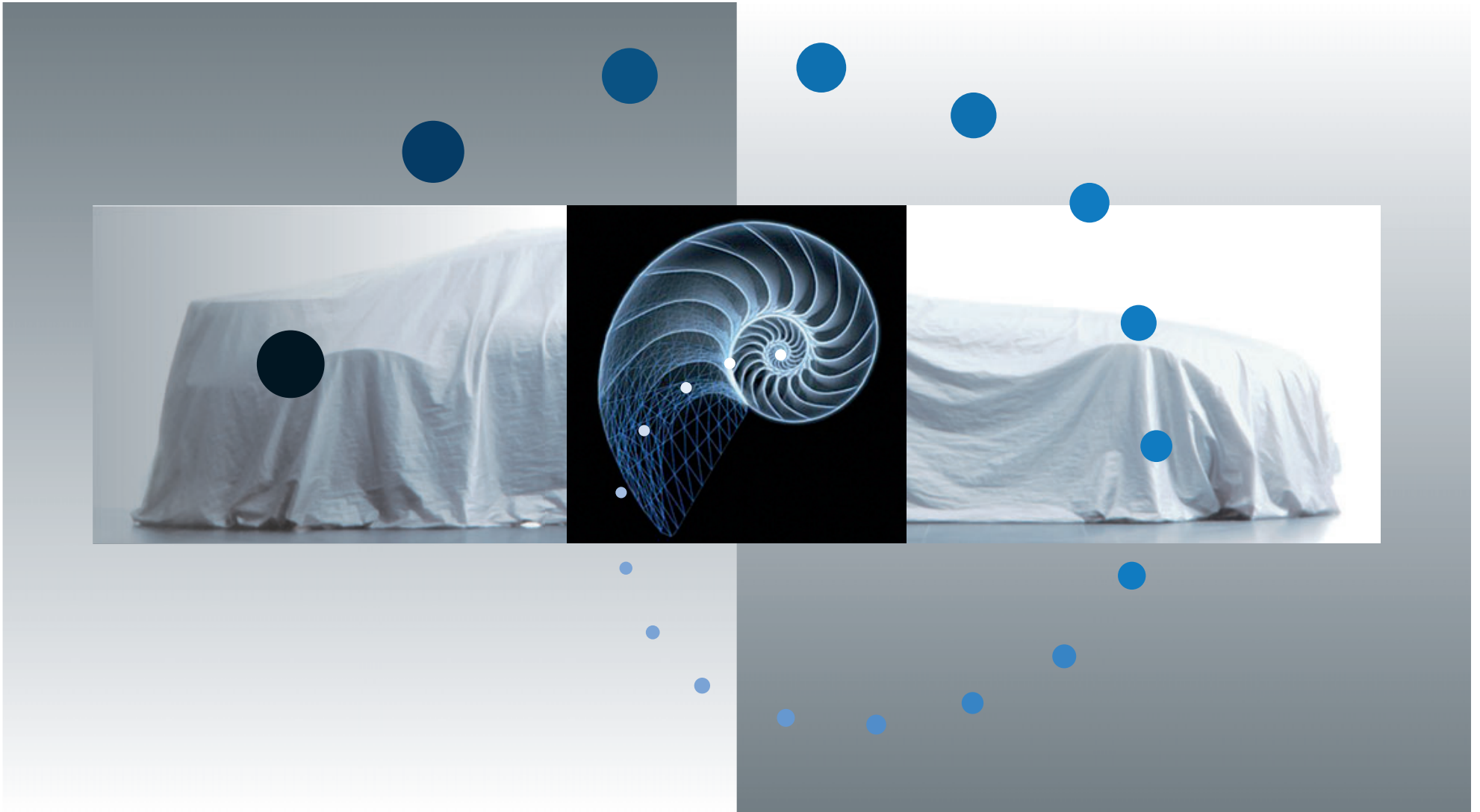


Innovative Measurement Technology



20 Years of Comprehensive Solution Competence



Why we...?

What are our outstanding qualities...?

Ladies and gentlemen,

these are the questions that we ask ourselves – trying to gain new insights every day.

Driven by the desire to achieve top performance in cooperation with our partners, we focus on innovative metrological solutions in the field of mobile and stationary applications.

The projects are realized in partnership with our customers, enabling us to analyse and discuss their problems in detail.

Within these cooperative efforts, we maintain a continuous dialogue with the customer – including fast response time, flexibility and personal commitment from all our staff members.

We would appreciate welcoming you in our list of satisfied customers!

With kind regards

A handwritten signature in blue ink, appearing to read "M. Herzog". The signature is fluid and cursive, with a long horizontal stroke at the end.

Manfred Herzog
Business Manager



Product Portfolio

1.0 Overview

2.0 DAQ System: The ARCOS Concept

2.1 Data Logger: μ CROS

2.2 Analogue and digital data acquisition

2.3 Sensors

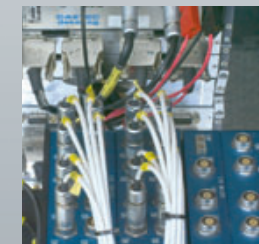
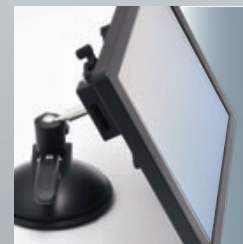
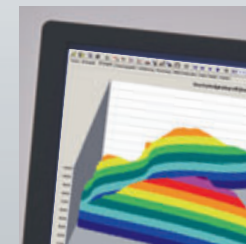
3.0 GPS-Sensor and TFT Monitors

4.0 Telemetry systems

5.0 Service

6.0 Our company

7.0 Contact



DAQ System: The ARCOS Concept

Modulare Performance

Efficiency requires comprehensive concepts – also in measurement technology

The ARCOS X-Over Concept offers an efficient solution for long-term data recording including detailed analysis with tools such as CANoe, CANape, DIAdem™, LabVIEW, INCA and others.



Data Logger: μ CROS

Compact Performance

Intelligence – concentrated in an extremely small space – 100% ARCOS compatible

μ CROS – the new generation of intelligence, energy-efficient, mobile and robust data loggers for long-term monitoring within a temperature range from -40°C to 85°C .

Free selectable interfaces option like UMTS, WLAN and GPS allowing global data transfer.

μ CROS is ready for the first message which is another outstanding feature.



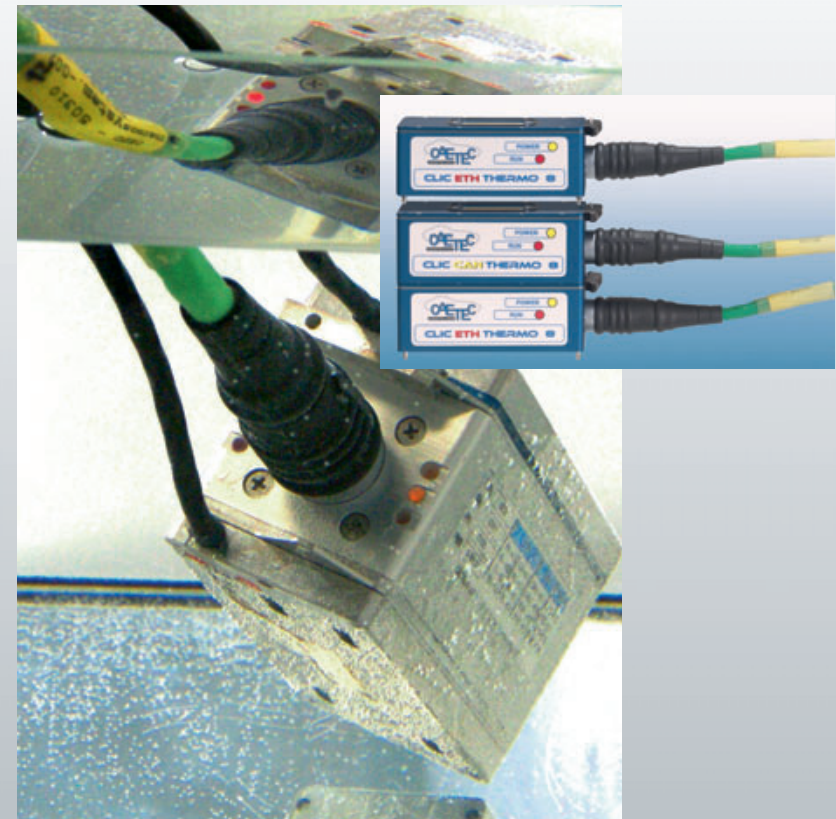
Analogue and Digital Signal Acquisition Reduced to the Maximum



Reduced vehicle set-up times by installing the intelligent CAN/Ethernet modules close to the sensors.

CLIC – the new module generation designed for tomorrow – and suited for use in present-day applications.

- Communication via CAN or Ethernet
- Reduced set-up times by using cable-free, integrated module plug connections
- Intelligent and free configurable power management
- Power-efficient models unload the vehicle power network
- Waterproof and rugged Aluminium housings ensure safe operation in a wide range of environmental conditions with temperatures ranging from -40°C to 125°C .



High-Quality Sensors

for Automotive Research and Dimension

Texense sensors are characterized by their reliability and high precision – features that have allowed cooperation with the most important motor-sports companies for 20 years:

- Infrared temperature sensors with a 0° or 90° lense, providing CAN output
- Pitot sensor, 4 mm or 6 mm diameter
- Differential pressure sensor providing CAN output
- Acceleration sensors: 1 to 3 axes, measuring range ± 2 g to ± 20 g
- Gyroscope: 1 to 3 axes, 50° - 100° - 150°/s
- Strain gauges



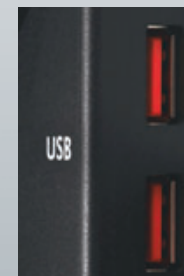
GPS-Sensor and TFT Monitors Systems in a new Dimension

The stand-alone xProGPS System provides accurate measurement results for a variety of vehicle tests:

- consumption measurement
- performance measurement
- brake measurement
- coast-down tests
- distance measurement / route mapping

The measured data are displayed on a TFT monitor or a driver's display providing precise presentation of the test results:

- touch screen for 10" and 12" monitors
- high contrast
- USB hub
- 1024-by-768 pixel resolution
- accessories kit for quick installation



Telemetry Systems

Contactless Transmission of Physical Values

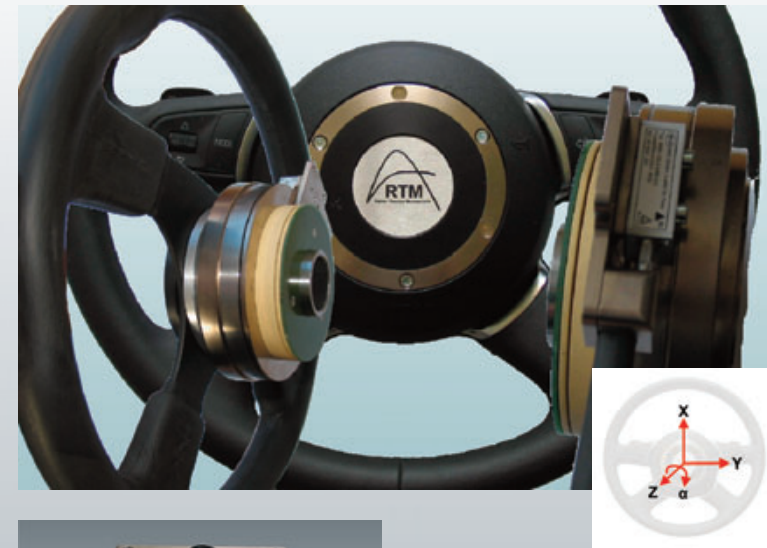
Measurement Steering Wheels/Steering Measurement Modules

Integrated steering measurement systems for determining:

- Steering torque
- Steering angle
- Steering speed
- Steering acceleration
- Vibrations

Axial Multi-Channel Telemetry

Especially suited for applications on brake, wheel and shaft test stands, with exposed shaft ends.



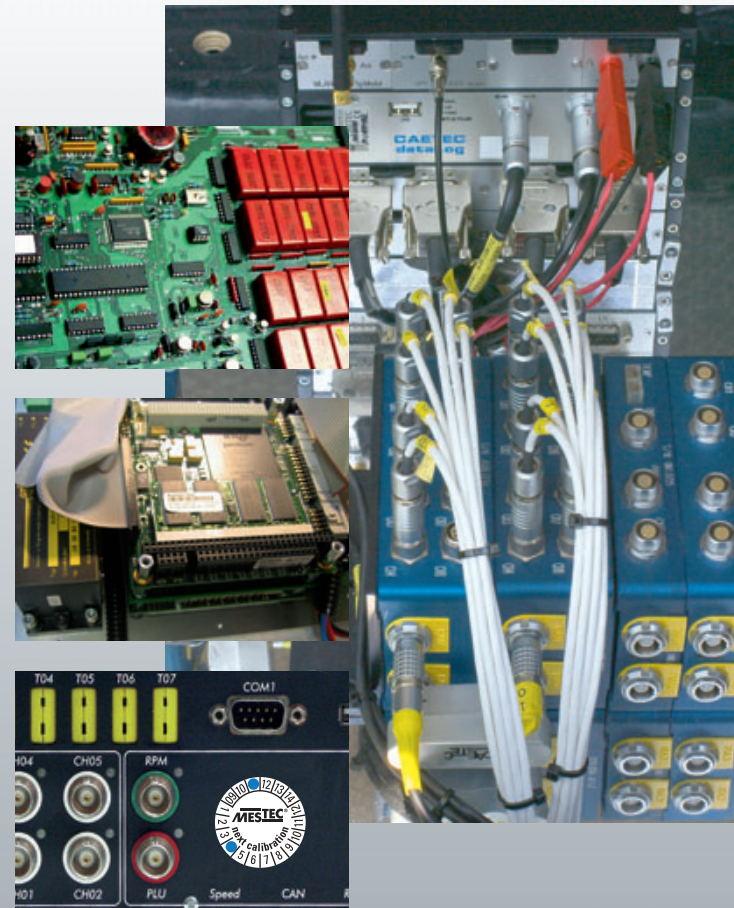
Service

Engineering within a Project Partnership



We are offering you the best possible support for solving complex measuring tasks, from the initial definition to the inspection and approval of the completed system, including intensive user training:

- Software and hardware development
- Embedded PC systems
- Microcontroller and assembly design
- Analogue and digital technology
- System maintenance and calibration
- Development of application software
- Inhouse support
- On-the-job training
- Software coaching



Our Company



20 Years of Comprehensive Solution Competence

MESTEC – in service of the customer for 20 years, based on trust, fairness, cooperation, and convincing metrological system solutions.

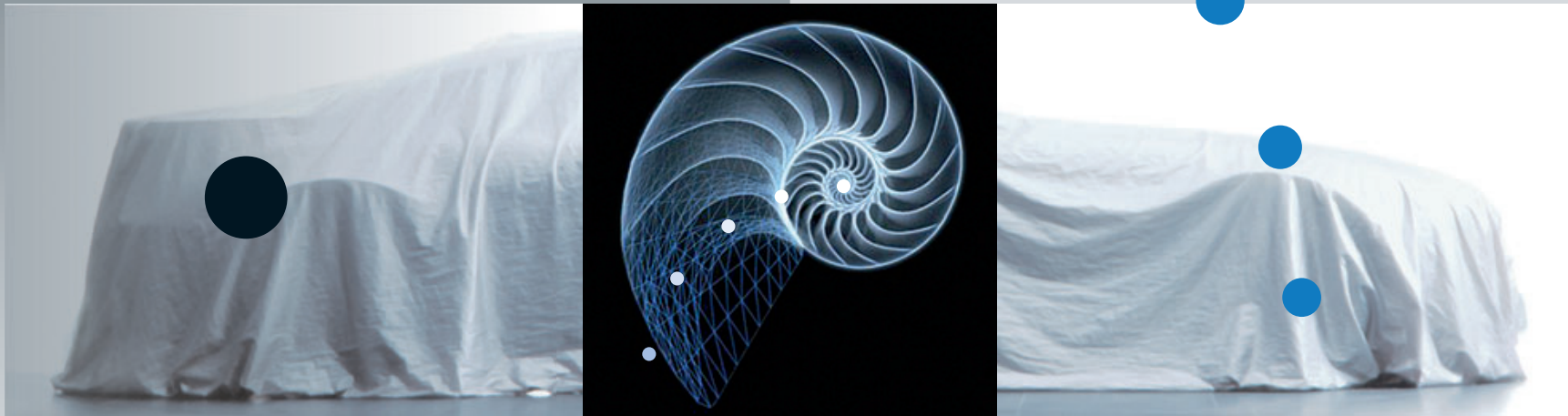
MESTEC data acquisition systems designed to measure and analyse physical values are in use in a wide variety of industries. Whether mobile or stationary applications – the reference list of our customers includes the top 100 companies.



- 2011** Product launch of the new CLIC-module generation
- 2010** Product launch of the μ CROS data logger
- 2009** Takeover of sales and marketing of the telemetry products of RTM Rainer Thomas Messtechnik
- 2008** Takeover of sales and marketing of the Suchy Data Systems product portfolio
- 2007** Product launch of the ARCOS system
- 2005** Opening of the technical office in Stuttgart, directed by Udo Johannkemper, Dipl.-Ing. (Graduated Engineer)
- 2002** Licensing for the MEC modules granted to CAETEC
- 1999** Development of the MEC (MESTEC Extremely Compact) CAN bus modules
- 1998** Expansion of the service offer (hardware and software development) by Physikalische Messsysteme Ltd.
- 1996** Development of the Merlin concept for mobile measured value acquisition
- 1995** ISO 9001 certification
- 1993** Development of the PC 2000 system to be connected to the IMP modules
- 1989** Foundation of the MESTEC GmbH by Manfred Herzog (Business Manager)

Contact

www.mestec.de



MESTEC GmbH

Bussardstr. 5

D-82166 Gräfelfing

Phone: (+49) (89) 86 49 66-0

Fax: (+49) (89) 86 49 66-29

info@mestec.de